

MELDERGRUPPE NR.

59

MELDERORT

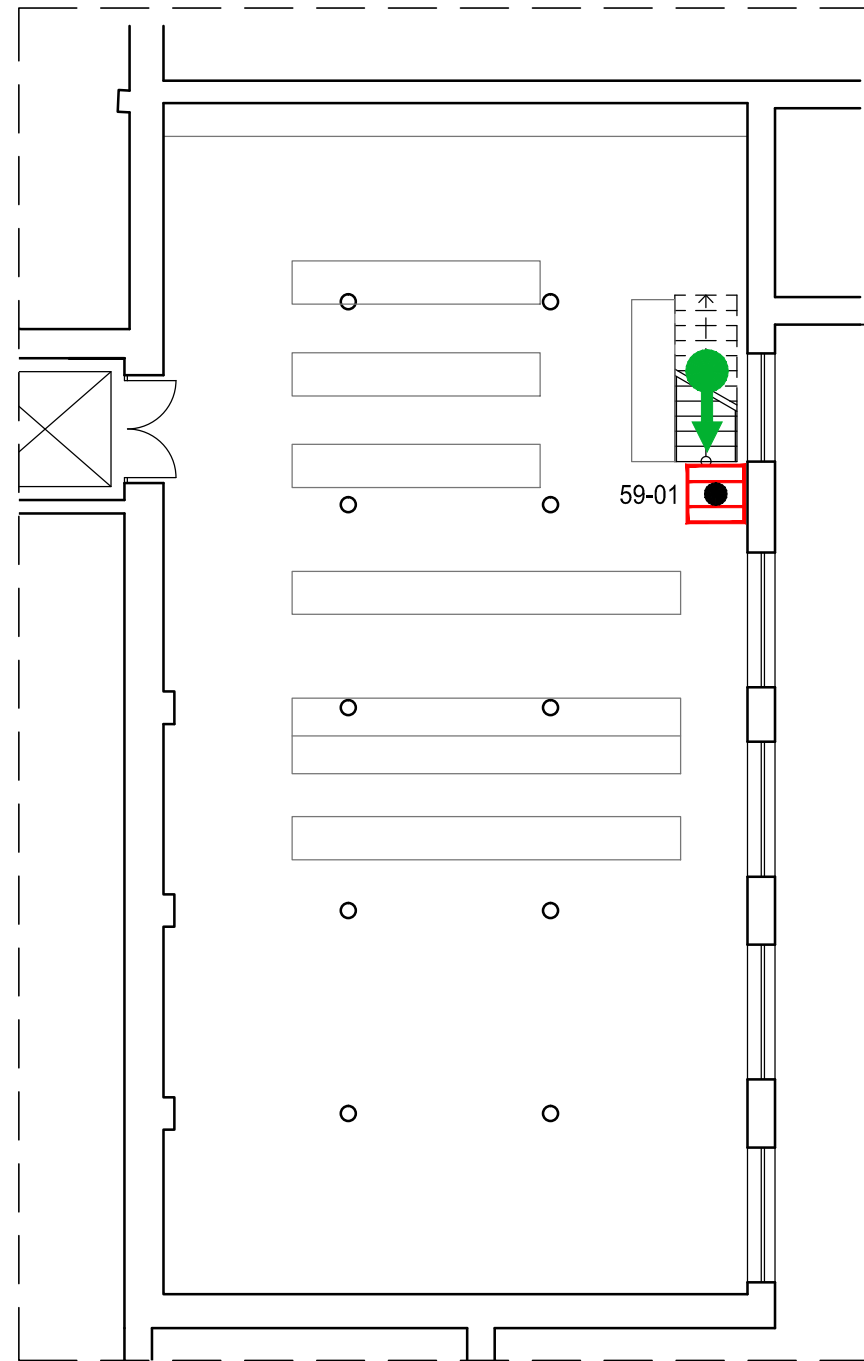
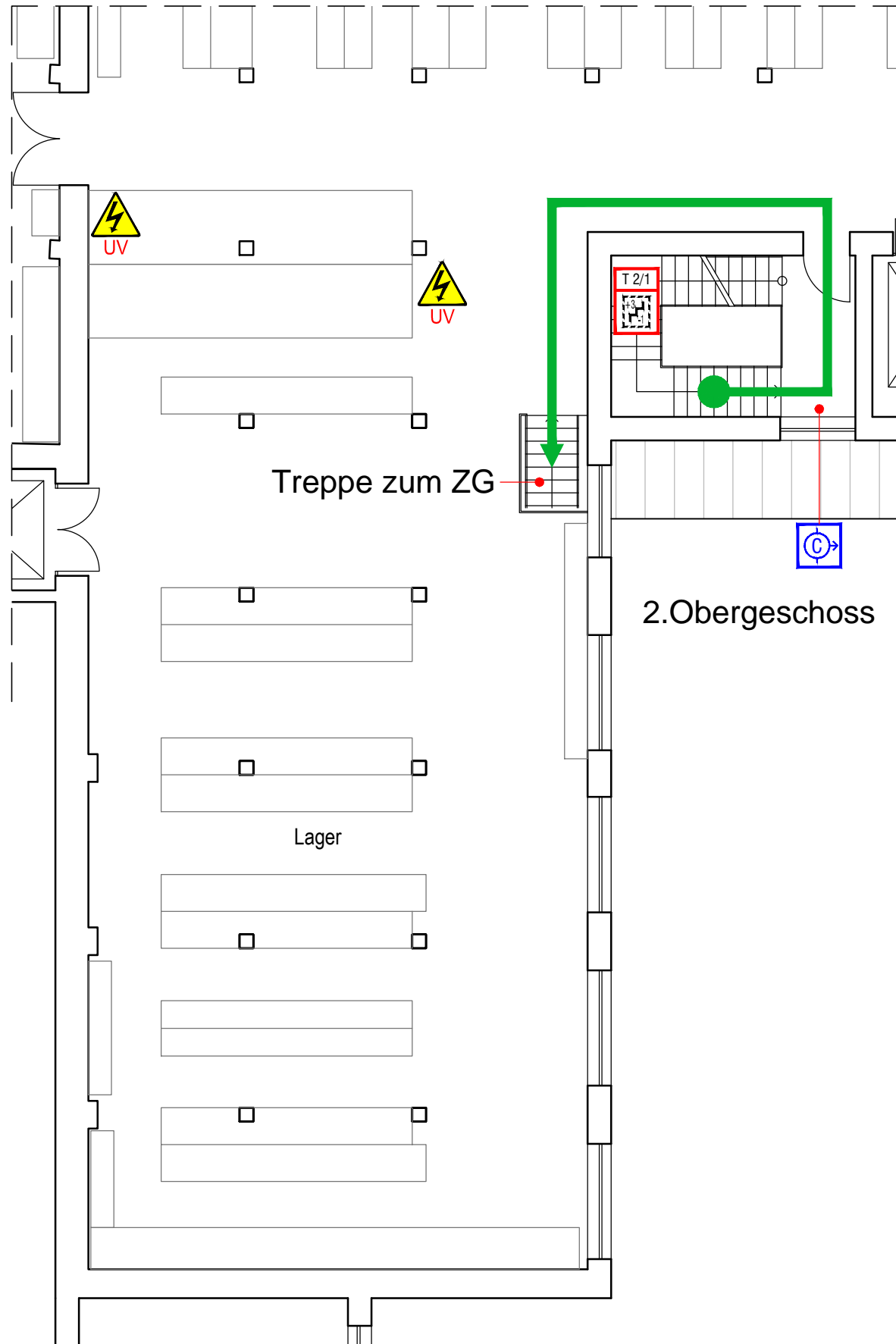
Lager / Zugang über 2. OG

MELDERART



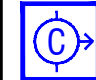



1 Handfeuermelder

BAUTEIL / GESCHOSS

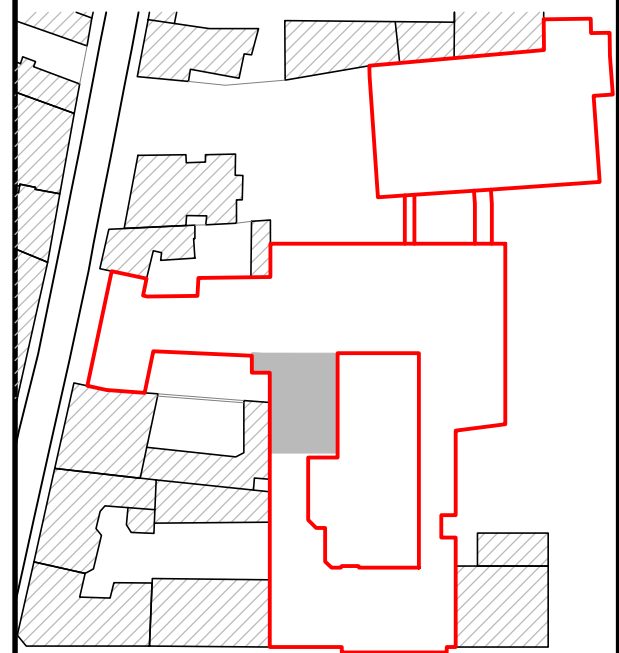
Straßentrakt  
Zwischengeschoss



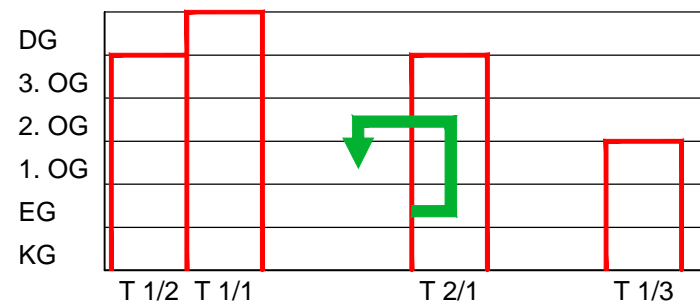
Legende

-  Handfeuermelder
-  Treppenraum; ohne Feuerwiderstand, erreichbare Geschosse, mit Treppenraumbezeichnung
-  Schlauchanschlussventil, trocken, C-Anschluss
-  Vorsicht Elektrische Anlagen
-  Standortpunkt
-  Anrückweg

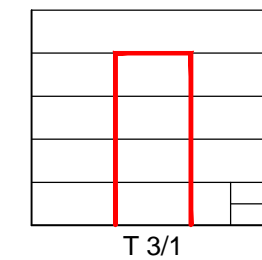
Überwachungsbereich Übersicht



Gebäudeschnitt  
Straße 1



Straße 2



Firma  
GmbH & Co. KG  
Straße  
Ort